

## TECHNICAL NOTE

### Maple Model(s)

HMI's

### Title

Download a Project to an HMI with a USB Flash Drive or SD Card

TN5087

P/N: 0907-5087

Rev. 02 Date: 10/13/2017

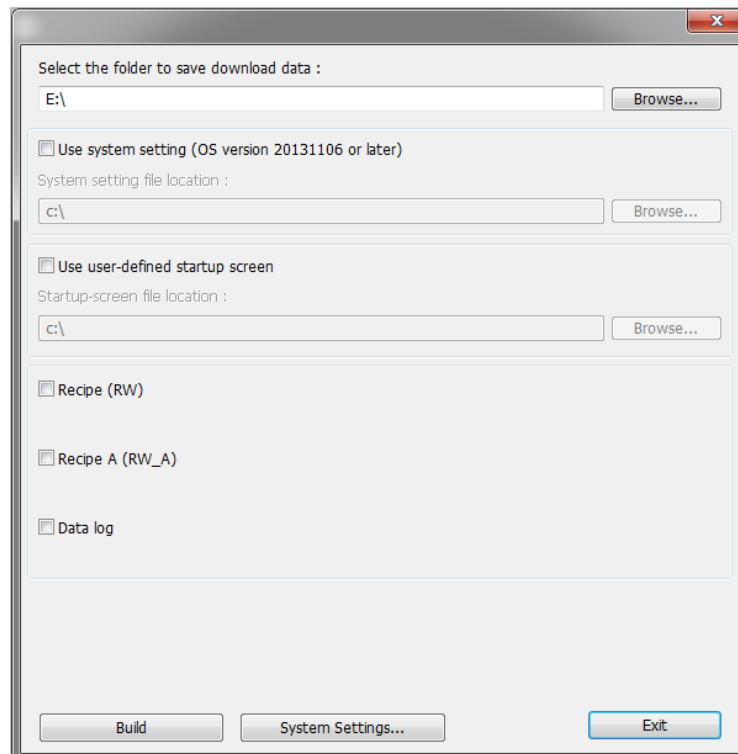


## Summary

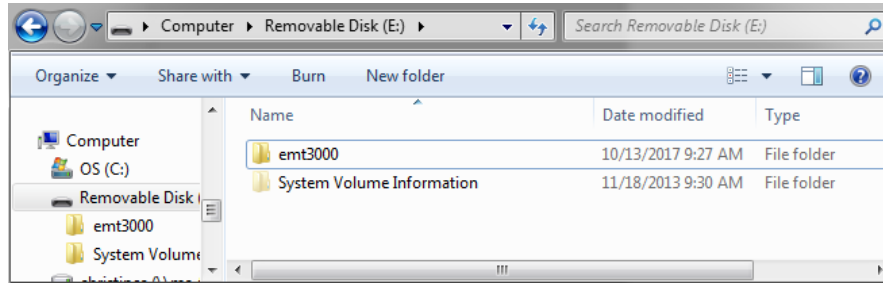
This technical note describes how to download an EZware project to a Maple Systems HMI with a USB flash drive or SD card.

## Solution

1. Open the project in EZwarePlus and compile the project (Tools > Compile).
2. Select *Build Data for USB Disk or SD Card Download...* from the **Tools** menu.
3. In the dialog box, under *Select the folder to save download data:* use the **Browse** button to select the location of the USB drive or SD card to save the project to. Click **Build**. When the process is complete the message *Download data created successfully* appears. Click **OK** and click **Exit**.



- A folder named *emt3000* (or *mt8000*) will be created on the root (main) directory of the USB flash drive or SD card.



- Remove the flash drive from your computer and connect it to the HMI. When a flash drive is inserted into the HMI5000 Series, the following dialog is displayed:



<b>Download</b>	Transfer data from the flash drive to the HMI.
<b>Upload</b>	Transfer data from the HMI to the flash drive.
<b>Restart Project and Exit</b>	Close the dialog and restart the HMI.
<b>Cancel</b>	Close the dialog without transferring.
<b>Time Remaining</b>	The dialog will automatically close after 10 seconds if no selection is made; shows the time remaining.

**Note:** The Download/Upload dialog box can be disabled. If it does not pop up when the USB flash drive or SD card is installed, open the System Settings in the HMI and enable it on the Miscellaneous tab.



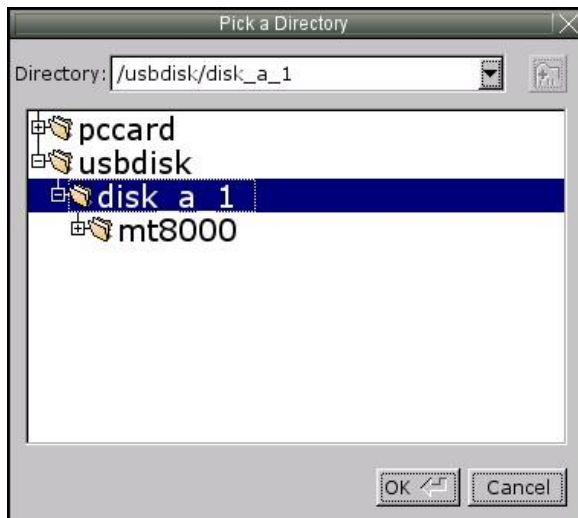
6. Select **Download**. A dialog box appears requesting the Download password and what data to download. The default password is 111111.



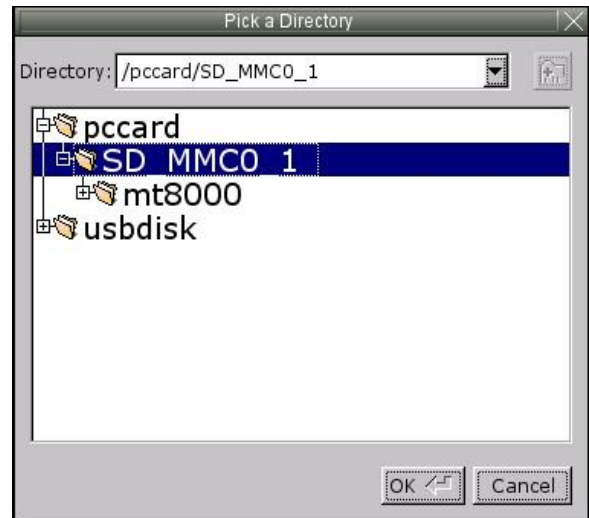
<b>Password</b>	Enter the Download password.
<b>Download Project Files</b>	When checked, the HMI checks the specified folder for project data, and transfers it if it exists.
<b>Download History Files</b>	When checked, the HMI checks the specified folder for history data, and transfers it if it exists (includes data log files, event log files, and recipe files).
<b>Clear History Files</b>	When checked, clears all history files in the HMI (includes data log files, event log files, and recipe files).

7. If a USB flash drive is being used to download the project, select the folder under the *usbdisk* folder (*disk\_a\_1*) and then click **OK**. If an SD card is being used, select the folder under the *pccard* folder (*SD\_MMCO\_1*). If the project is in a folder on the USB drive or SD card, select the folder just above the *emt3000* (or *mt8000*) folder.

**Note:** Do not select the *mt8000* (or *emt3000*) folder, but the folder just above it.



**USB flash drive**



**SD card**

8. Click **OK** to download the project from the USB drive or SD card to the HMI. When the download is complete, the HMI automatically reboots and runs the project.

**Note:** *The storage device can be left with the HMI as a backup should the project need to be downloaded to the HMI again.*